

RELIEF VALVE P-612A

ALUMINUM

Bulk Tank Trucks • Pneumatic Conveyor Systems
Railroad Dry Bulk Tanks
NPT Threaded Inlet



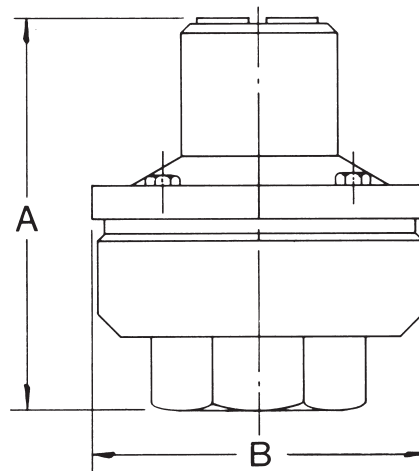
NEW IMPROVED DESIGN

The new seat design offers increased capacity and improved blowdown (reseating).

TAMPERPROOF.

Tank trailer drives cannot alter the pressure setting in the field to speed up delivery. A wire seal assures the pressure setting. Aluminum body plus stainless steel seating provide both lightweight construction and corrosion resistance. Inlet is 2" FNPT.

Temperature Range (-20°F to 400°F). This valve has a VITON diaphragm and stainless steel disc.



DIMENSIONS-INCHES

SIZE	A	B
2	5 1/2	4 5/8

The information presented on this sheet is correct at time of publication. Milwaukee Valve reserves the right to change design and/or materials without notice. For our Installation, Operation and Maintenance Manual and the most current product information go to www.milwaukeevalve.com.
⚠ State of California Prop 65 **WARNING:** Cancer and Reproductive Harm. For more information visit www.p65warnings.ca.gov.

