

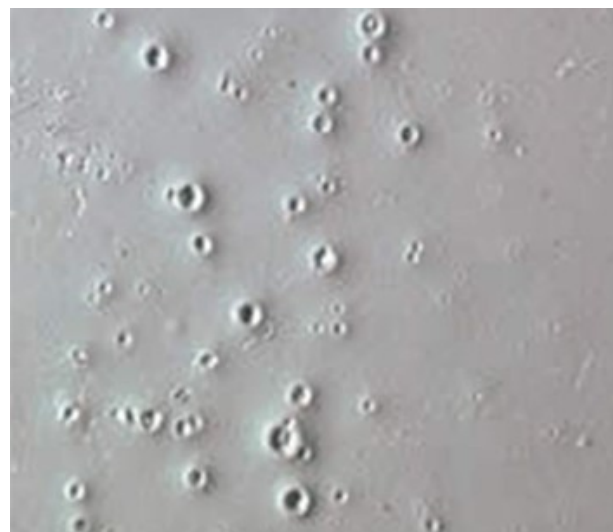
December 11, 2024

No Silicone Means No Headaches.

Milwaukee Valve is often asked if we can furnish valves that are “**silicone free**” for specific applications. For those with automotive plants in your area, silicone-free is a common requirement.

But what does silicone-free mean? Why the sensitivity when it comes to silicone? A good example would be old print photographs. Ever notice the tiny white dots that sometimes appeared on these old photos? Most likely, these dots are caused by silicone or some other contaminant. Back in the day, Eastman Kodak even developed their own internal standard for silicone cleanliness; TS-71. As cleaning methods and testing improved, this phenomenon eventually disappeared. Of course, for the most part, so did film and film processing. Sadly.

Today, there are still automotive and other paint processes can experience the same issues, sometimes called **fish-eyeing**. Fish-eyeing occurs when oils, waxes, or silicone contaminate the painting surface or the paint itself. Silicone is widely used in many of the products we use every day, especially



Defects in coatings characterized by small circular craters that look like a fish's eye.

health and beauty products like lotions and make-up. It is also sometimes used as a release agent for injection-molding processes.

Silicone can have an adverse effect for many end users. Therefore, we don't use silicone in **any** of our processes, nor do any of our outside vendors. These products and processes are strictly controlled through our ISO-9001 Quality Management System. Any

deviation must be reported to our QC and engineering departments. Once the material leaves our facility, the introduction of any contaminant, including silicone, is beyond our control.

For more information on silicone and how we make our valves, visit the [Milwaukee Valve](https://www.milwaukeevalve.com) website, or contact your [Milwaukee Valve sales representative](#).



MILWAUKEE VALVE

www.milwaukeevalve.com
262.432.2700



HAMMOND VALVE

www.hammondvalve.com
262.432.2702

16550 West Stratton Drive, New Berlin, WI 53151

