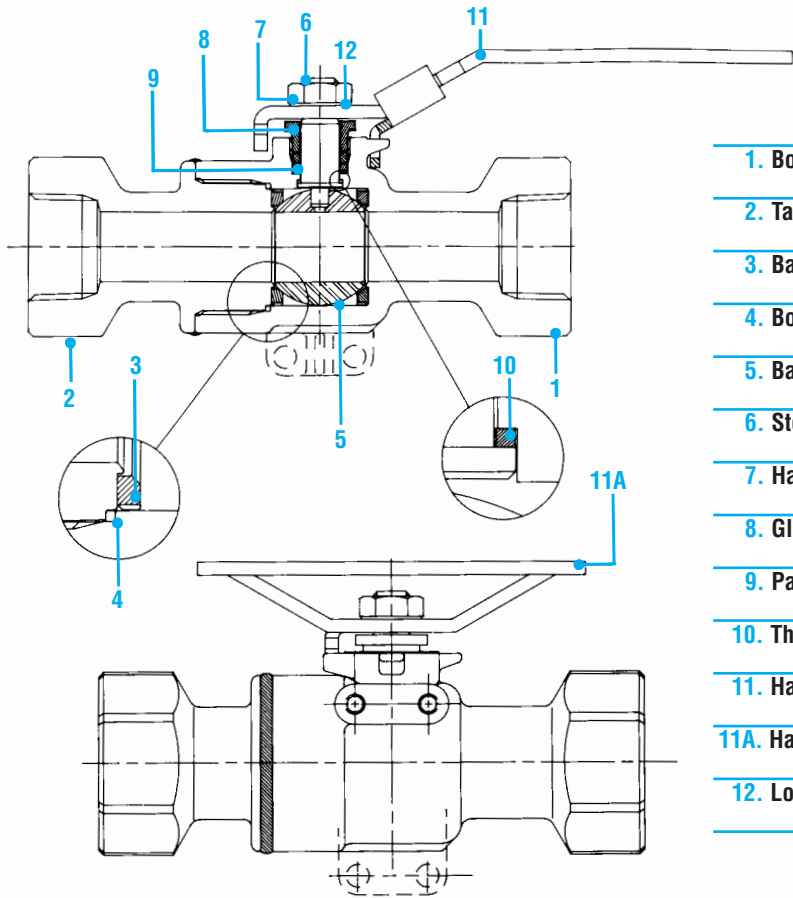
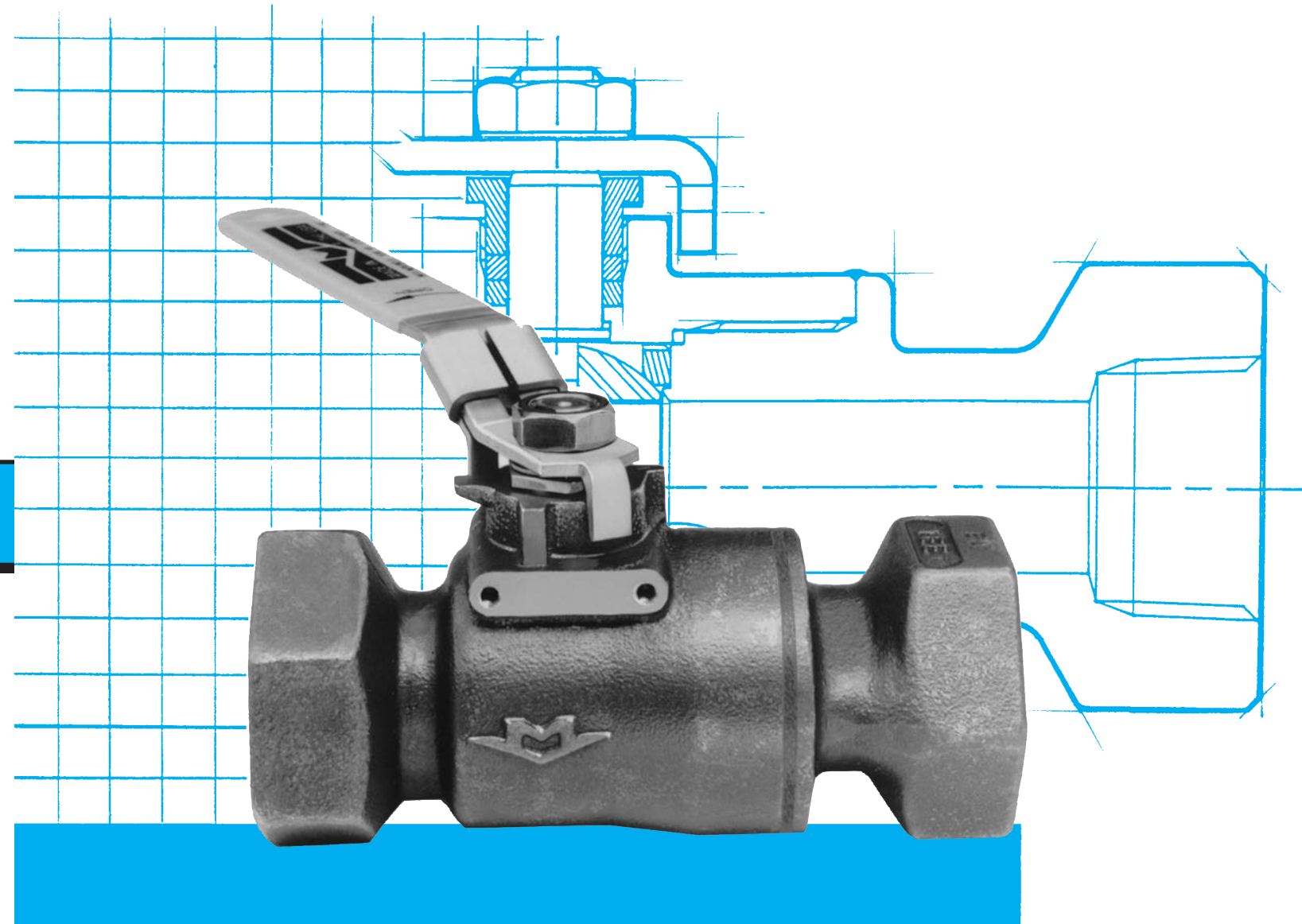


MATERIAL LIST



Part	41SS	41CS
1. Body	Stainless Steel ASTM A351/A744 CF3M	Carbon Steel ASTM-A216 GR.WCB
2. Tailpiece	Stainless Steel ASTM A351/A744 CF3M	Carbon Steel ASTM-A216 GR.WCB
3. Ball Seal	Reinforced PTFE 15% Glass Filled	Reinforced PTFE 15% Glass Filled
4. Body/Tailpiece Seal	PTFE	PTFE
5. Ball	Stainless Steel ASTM A276, Type 316	Stainless Steel ASTM A276, Type 316
6. Stem	Stainless Steel ASTM A276, Type 316	Stainless Steel ASTM A276, Type 316
7. Handle Nut	Stainless Steel 18-8 Commercial	Stainless Steel 18-8 Commercial
8. Gland	Stainless Steel ASTM A276, Type 316	Stainless Steel ASTM A276, Type 316
9. Packing	Graphite	Graphite
10. Thrust Washer	Reinforced PTFE 25% Glass Filled	Reinforced PTFE 25% Glass Filled
11. Handle-Oval	Carbon Steel 1010 Commercial	Carbon Steel 1010 Commercial
11A. Handle-Latch-Lock	Stainless Steel	Stainless Steel
12. Lockwasher	Stainless Steel	Stainless Steel

41SS AND 41CS SEAL-WELDED, HIGH PRESSURE, FIRE-SAFE BALL VALVES



ORDERING INFORMATION

1"-41SSOF-02-OH-VB

Size: 1/4"-2-1/2"

Family: Seal-Welded
Extended Ends

Body & Tailpiece: C = Carbon Steel
S = Stainless Steel

Ball/Stem Material: C = Carbon Steel
S = Stainless Steel

End Connection Type:

0 = NPT	A = Sched. 10 B.W. - 4"
1 = Skt. weld	Tube Extension
2 = Sched. 40 B.W.	B = Sched. 40 B.W. - 4"
3 = Sched. 80 B.W.	Tube Extension
6 = Skt. Weld Tipc./Frnt. Body C	= Sched. 80 B.W. - 4"
	Tube Extension

Seat Material:

01 = Virgin PTFE
02 = Reinforced PTFE
03 = Steam Seats
06 = ENDUROFIL
07 = Delrin

Port Size: F = Full Port

External Options:

SH = Stainless Handle
LL = Stainless Latch-Lock Handle
OH = Carbon Steel Oval Handle
OS = Stainless Steel Oval Handle
LO = Locking Spring-Return Stainless Steel Oval Handle
XH = Extended Handle
LS = Stainless Spring Lock Latch Handle

Internal Options:

AD = Assemble Dry
GB = Grounded Ball
VB = Vented Ball
*3K = 3000 PSI

Note: If specifying more than one internal option, list ALPHABETICALLY.

* Only Available with an 06 or 07 seat. Not B16.34 compliant.

Valves built to take it... since 1901



The information presented on this sheet is correct at the time of publication. Milwaukee Valve reserves the right to change design, and/or material specifications without notice. For the Installation, Operation and Maintenance Manual (IOM) see the engineering section on our website. For the most current information access www.milwaukeevalve.com

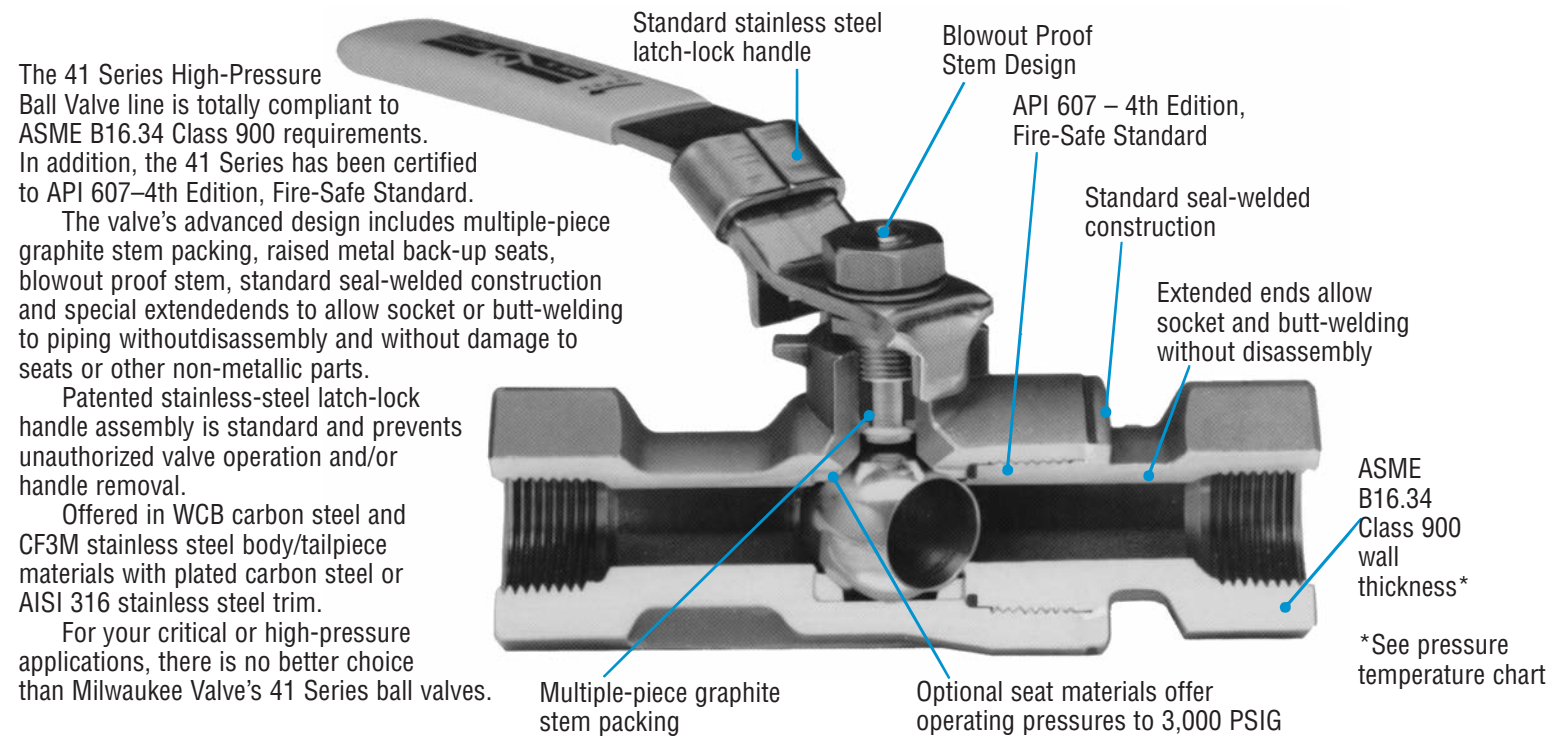
16550 West Stratton Drive
New Berlin, Wisconsin 53151
Telephone 262/432-2700
FAX 262/432-2701
www.milwaukeevalve.com

© Milwaukee Valve Company, 1993

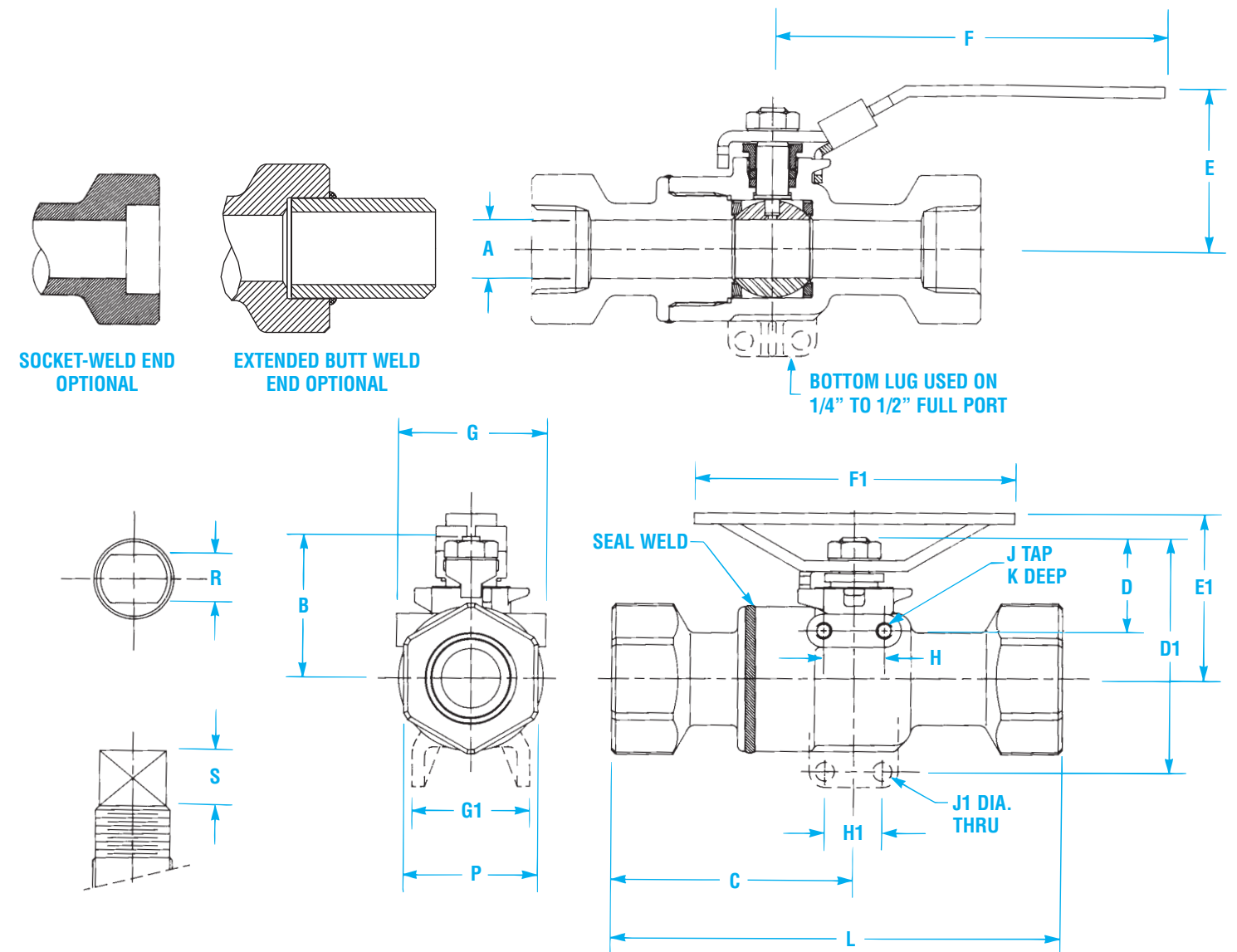
INNOVATION IN EVERY VALVE



41SS AND 41CS SEAL-WELDED, HIGH-PRESSURE, FIRE-SAFE BALL VALVES

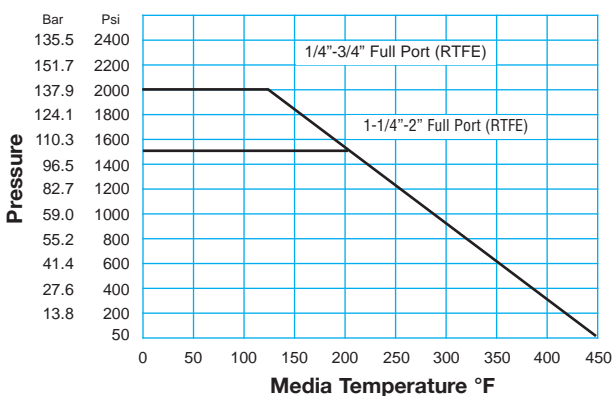


DIMENSIONS



PERFORMANCE DATA

PRESSURE/TEMPERATURE RATINGS*



*Valves equipped with standard RTFE seats.
*Higher ratings can be achieved with alternate seats. Consult factory

TORQUE RATINGS AND CV

VALVE SIZE FULL PORT	MAXIMUM BREAKAWAY TORQUE (in lbs.)	Cv.
1/4 – 1/2	60	9.8
3/4	110	35
1	130	47
1-1/4	260	81
1-1/2	330	105
2	550	330

SPECIFICATIONS

Approved valves shall be fully compliant to ASME B16.34 and certified to API 607 – 4th Edition, Fire-Safe Standard. Valves must allow welding into pipe line or back-welding without disassembly. Body-to-tailpiece connection must be seal-welded.

Handle assembly shall be latching and locking, and must be of stainless steel material. Milwaukee Valve number 41 SS/CS Series or approved equal.

FULL PORT	A	B	C	D	D1	E	E1	F	F1	G	G1	H	H1	J	J1	K	L
1/4, 3/8, 1/2	.50	1.52	2.72		2.41	2.08	2.89	5.8	4.6		1.56		1.00		.28		5.1
3/4	.87	2.38	3.37	1.71		2.65	2.78	7.6	4.9	2.56		.578		1/4-20		.28MIN	6.5
1	1.00	2.51	3.69	1.65		2.79	3.91	7.6	4.9	2.83		.953		1/4-20		.28MIN	6.9
1-1/4	1.25	3.08	3.93	1.88		3.51		10.0		2.83		.953		1/4-20		.28MIN	7.2
1-1/2	1.50	3.32	5.00	1.82		3.75		10.0		2.75		1.719		1/4-20		.28MIN	8.5
2	2.00	3.73	5.57	1.79		4.16		10.0		2.75		1.719		1/4-20		.28MIN	9.4

FULL PORT	P	R	S
1/4, 3/8, 1/2	1.34 1.62	.275	.32
3/4	1.97	.355	.60
1	2.31		
1-1/4	2.63	.451	.63
1-1/2	3.25		
2	3.81		